



MSG

McINTOSH

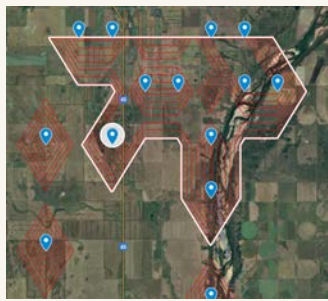
SAND & GRAVEL

Technical Services

McIntosh Sand & Gravel (MSG), is a Saskatchewan based gravel crushing and engineering company. We partner with RMs to manage the gravel life cycle.

Resource Planning

We work with your RM to identify gravel needs, current inventories, resource estimates, potential pit locations, and create a plan to optimize the resources.



Pit Searching

MSG can use different tools and our engineering expertise, including proprietary data science software, to identify pit locations for investigation.

Testing and Pit Management

McIntosh Sand & Gravel can complete EM surveys, test pitting, sampling, and reporting to help manage pit life cycle and replacement.

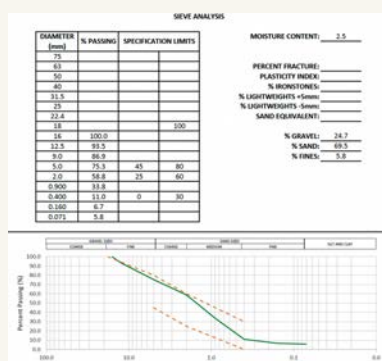


Drone Surveying

McIntosh Sand & Gravel has multiple drones to complete stockpile measurements, pit reports, and aide in gravel searching.

Reporting

We can compile all of the data into a documented plan for auditing and reporting.



Contact Us

306-361-7616
www.mcintoshgravel.com
luke.boyle@mcintoshgravel.com



MSG

McINTOSH

SAND & GRAVEL

Equipment Services

Crushing

McIntosh Sand & Gravel has multiple crushing plants ready to create the desired products safely and on-time.

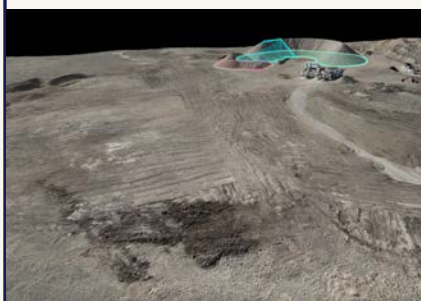
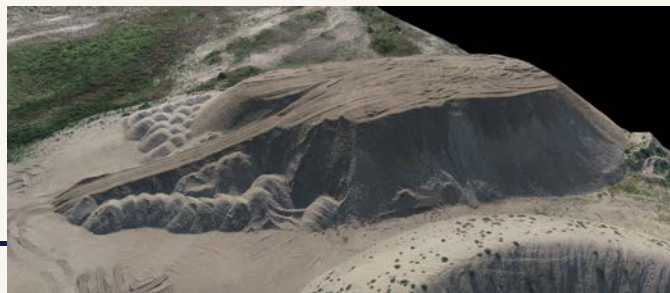


Hauling

McIntosh Sand & Gravel has access to a fleet of trucks ready to complete hauling and spreading contracts.

Stockpiling

McIntosh Sand & Gravel can utilize our fleet of mobile equipment to complete stockpiling jobs. This both reduces crushing costs and ensure no gravel resource is wasted.



Reclaiming

McIntosh Sand & Gravel can complete pit reclamation including slope remediation and topsoil spreading

Contact Us

306-361-7616
www.mcintoshgravel.com
luke.boyle@mcintoshgravel.com



MSG
McINTOSH
SAND & GRAVEL

References

R.M. of Craik No. 222

R.M. of Miry Creek No. 229

R.M. of Snipe Lake No. 259

R.M. of Rudy No. 284

R.M. of Fertile Valley No. 285

R.M. of St. Andrews No. 287

R.M. of Winslow No. 319

Contact Us

306-361-7616
www.mcintoshgravel.com
luke.boyle@mcintoshgravel.com

 **McINTOSH**